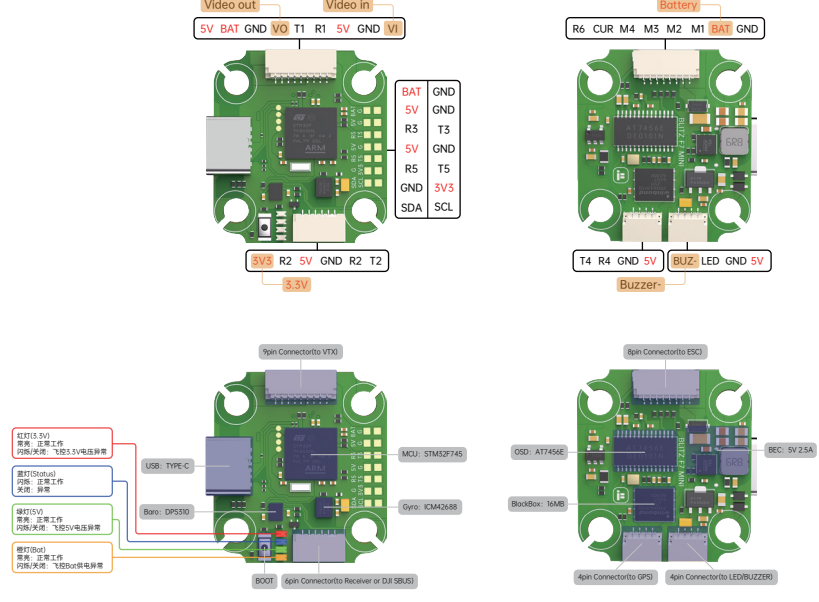


iFlight BLITZ MINI F745 说明书

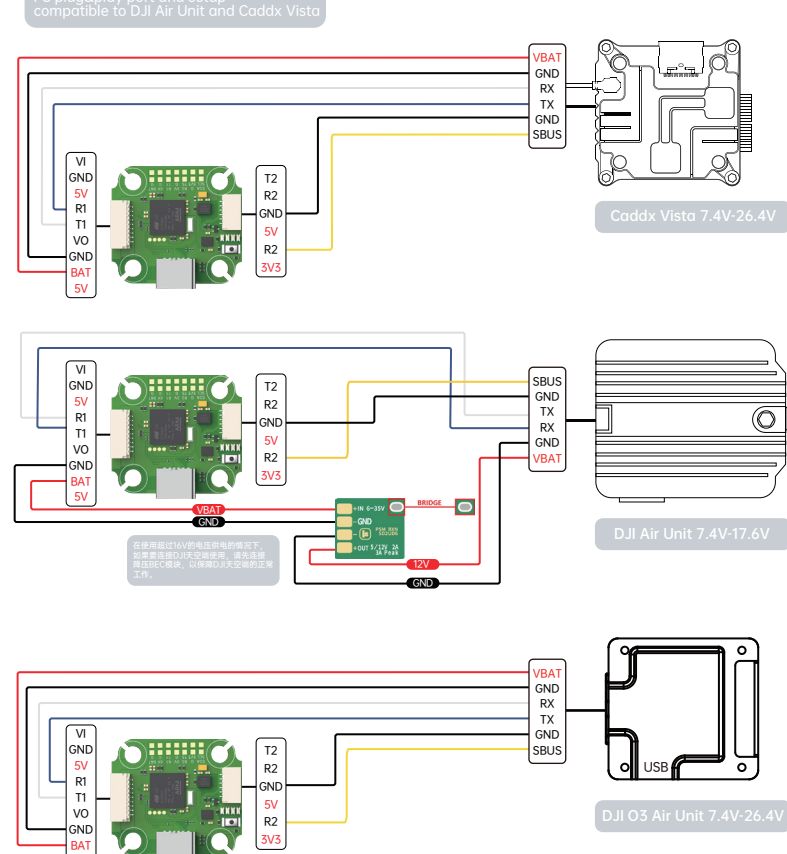
基本参数:

MCU: STM32F745
Gyro: ICM42688P
Baro: DPS310
OSD: AT7456E
BEC: 输出5V 2.5A持续输出电流, 5A峰值电流 (15秒)
BlackBox: 16MB
Uart: 6*UART(UART1, UART2, UART3, UART4, UART5, UART6)
UART1 for VTX HD/Analog
UART2 for Receiver
UART3, UART4, UART5 for GPS or 其他需要串口的设备
UART6 for ESC Telemetry
4*Shot/PWM outputs
1*IC
1xSH1.0 9pin connector for HD VTX/Analog VTX&CAM (5V/BAT/G/V0/T1/R1/SV/G/V1)
1xSH1.0 8pin connector for ESC (R6/CUR/M4/M3/M2/M1/BAT/G)
1xSH1.0 6pin connector for Any Receiver or DJI (SV3/R2/SV/IGR2/T2)
1xSH1.0 4pin connector GPS (T4/R4/G/SV)
1xSH1.0 4pin connector LED&Beeper (BUZ-/LED/G/SV)
4*0402 LEDs for FC STATUS (3.3V Red) / (Start Blue) / (SV Green) / (BAT Orange)
Smartaudio&IRC&Tramp VTX protocol supported
WS2812&WS2815 Strip: Yes
Beeper: Yes
外形尺寸: 30.5*27mm
孔位尺寸: 20*20mm/p4
重量: 4.8g

固件:
Betaflight: iFLIGHT_BUITZ_F7_AIO
INAV: /
ArduPilot: arduplane.with.bl



使用DJI遥控器



Identifier	Configuration/OSD	Serial Rx	Telemetry Output	Sensor Input	Peripherals
USB VCP	115200	Disabled	Disabled	Disabled	Disabled
UART1	115200	Disabled	Disabled	Disabled	Disabled
UART2	115200	Disabled	Disabled	Disabled	Disabled
UART3	115200	Disabled	Disabled	Disabled	Disabled
UART4	115200	Disabled	Disabled	Disabled	Disabled
UART5	115200	Disabled	Disabled	Disabled	Disabled
UART6	115200	Disabled	Disabled	Disabled	Disabled

Receiver

Serial (via UART) Receiver Mode

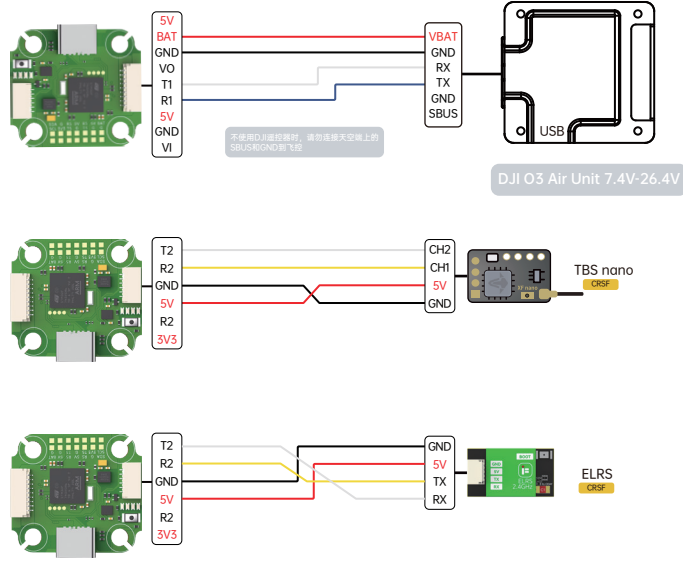
The UART for the receiver must be set to Serial Rx (in the Ports tab)

Select the correct data format from the drop-down, below:

SBUS Serial Receiver Provider

- 在Betaflight4.4版本下开启天空端OSD须在端口界面天空端信号线连接的端口号外设置位置选择VTX(MSP+Displayport)
- 注意: O3天空端使用的是大疆二代FPV遥控器 Air Unit 和 Vista使用的是大疆一代遥控器
- 使用DJI遥控器时, 存在两种不同的协议, 详细解释与使用如下
当使用sbush baud_fast模式时, 眼睛内的协议页面需要设置为Sbus BaudFast, 而飞控则进入Betaflight的CLI界面, 输入"set sbush baud fast=ON"输入"save"保存, 则为使用sbush baud_fast的模式。
使用普通SBUS模式时, 眼睛内的协议页面需要设置为普通, 而飞控则进入Betaflight的CLI界面, 输入"set sbush baud_fast=OFF"输入"save"保存, 则为不使用sbush baud_fast的模式。

使用其他遥控器



Identifier	Configuration/OSD	Serial Rx	Telemetry Output	Sensor Input	Peripherals
USB VCP	115200	Disabled	Disabled	Disabled	Disabled
UART1	115200	Disabled	Disabled	Disabled	Disabled
UART2	115200	Disabled	Disabled	Disabled	Disabled
UART3	115200	Disabled	Disabled	Disabled	Disabled
UART4	115200	Disabled	Disabled	Disabled	Disabled
UART5	115200	Disabled	Disabled	Disabled	Disabled
UART6	115200	Disabled	Disabled	Disabled	Disabled

Receiver

Serial (via UART) Receiver Mode

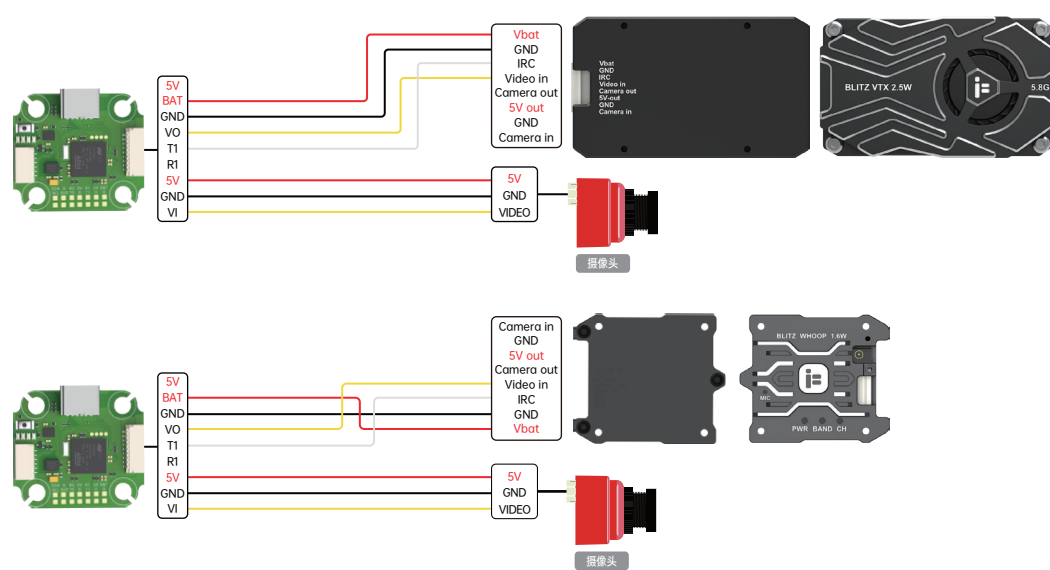
The UART for the receiver must be set to Serial Rx (in the Ports tab)

Select the correct data format from the drop-down, below:

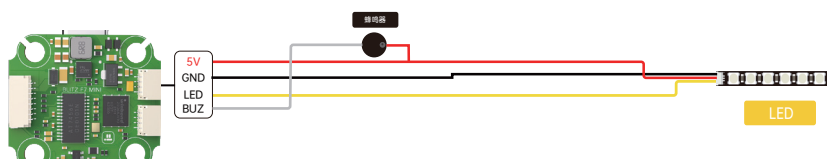
CRSF Serial Receiver Provider

图传/摄像头

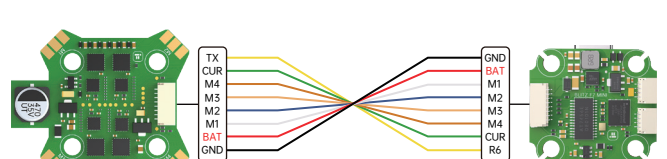
Identifier	Configuration/OSD	Serial Rx	Telemetry Output	Sensor Input	Peripherals
USB VCP	115200	Disabled	Disabled	Disabled	Disabled
UART1	115200	Disabled	Disabled	Disabled	Disabled
UART2	115200	Disabled	Disabled	Disabled	Disabled
UART3	115200	Disabled	Disabled	Disabled	Disabled
UART4	115200	Disabled	Disabled	Disabled	Disabled
UART5	115200	Disabled	Disabled	Disabled	Disabled
UART6	115200	Disabled	Disabled	Disabled	Disabled



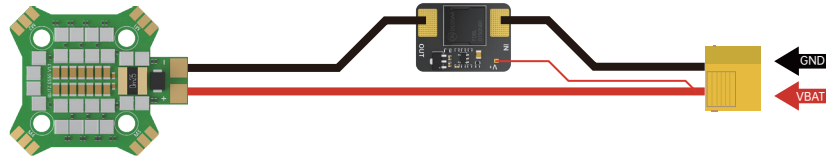
LED/蜂鸣器



电调



防打火模块



GPS

注:不能将SDA SCL定义映射到UART上

GND GND T3 GND T5 5V3 SCL
BAT 5V R3 SV R5 GND SDA

SV GND R4 T4

SDA SCL GND SV

GPS

GPS for navigation and telemetry

Note: Remember to configure a Serial Port (via Ports tab) when using GPS feature.

UBLOX Protocol

Auto Baud: Disabled

Auto Config: Disabled

Use Galileo: Disabled

Set Home Point Once: Disabled

Auto-detect: Ground Assistance Type

尺寸/孔位

