

iFlight BLITZ F411 1S Whoop AIO 板载2.4G ELRS 接线图

FC Firmware: IFLIGHT\_BLITZ\_F4SX1280

ESC Firmware: O-H-30 BLS 16.8

FrSKY R-XSR (R9Mini, R9MM, XM+)

Identifier	Configuration/MSP	Serial Rx
USB VCP	<input checked="" type="checkbox"/> 115200	<input type="checkbox"/>
UART1	<input type="checkbox"/> 115200	<input type="checkbox"/>
UART2	<input type="checkbox"/> 115200	<input checked="" type="checkbox"/>

Receiver  
Serial-based receiver (SPEKSAT, S) Receiver Mode  

Note: Remember to configure a Serial Port (via Ports tab) and choose a Serial Receiver Provider when using RX\_SERIAL feature.

SBUS Serial Receiver Provider

TBS Nano

Identifier	Configuration/MSP	Serial Rx
USB VCP	<input checked="" type="checkbox"/> 115200	<input type="checkbox"/>
UART1	<input type="checkbox"/> 115200	<input type="checkbox"/>
UART2	<input type="checkbox"/> 115200	<input checked="" type="checkbox"/>

Receiver  
Serial-based receiver (SPEKSAT, S) Receiver Mode  

Note: Remember to configure a Serial Port (via Ports tab) and choose a Serial Receiver Provider when using RX\_SERIAL feature.

CRSF Serial Receiver Provider

SBUS XM+

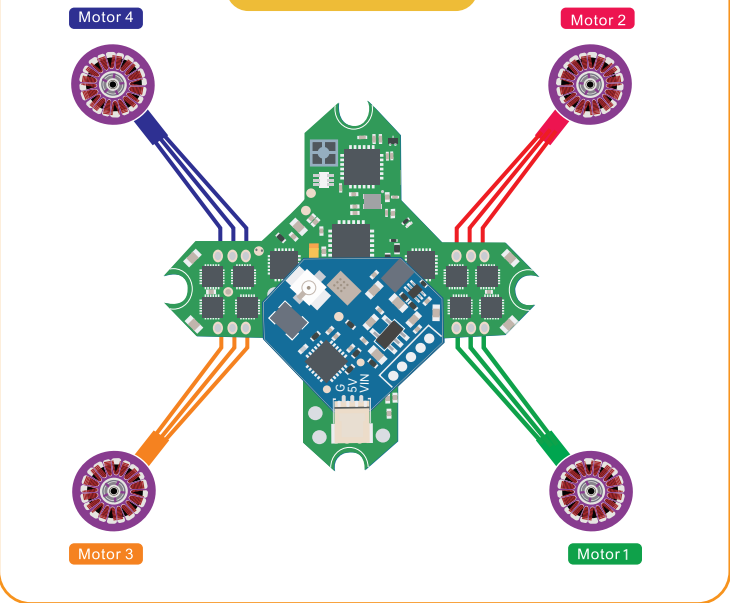
Identifier	Configuration/MSP	Serial Rx
USB VCP	<input checked="" type="checkbox"/> 115200	<input type="checkbox"/>
UART1	<input type="checkbox"/> 115200	<input type="checkbox"/>
UART2	<input type="checkbox"/> 115200	<input checked="" type="checkbox"/>

Receiver  
Serial-based receiver (SPEKSAT, S) Receiver Mode  

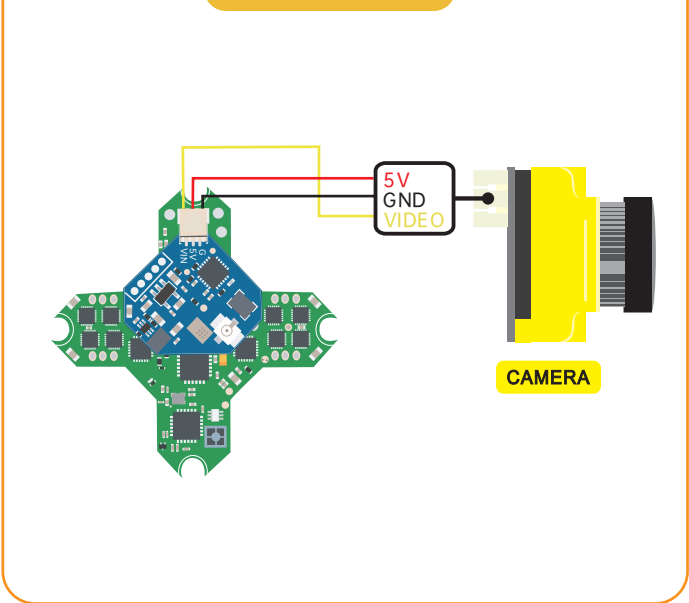
Note: Remember to configure a Serial Port (via Ports tab) and choose a Serial Receiver Provider when using RX\_SERIAL feature.

SBUS Serial Receiver Provider

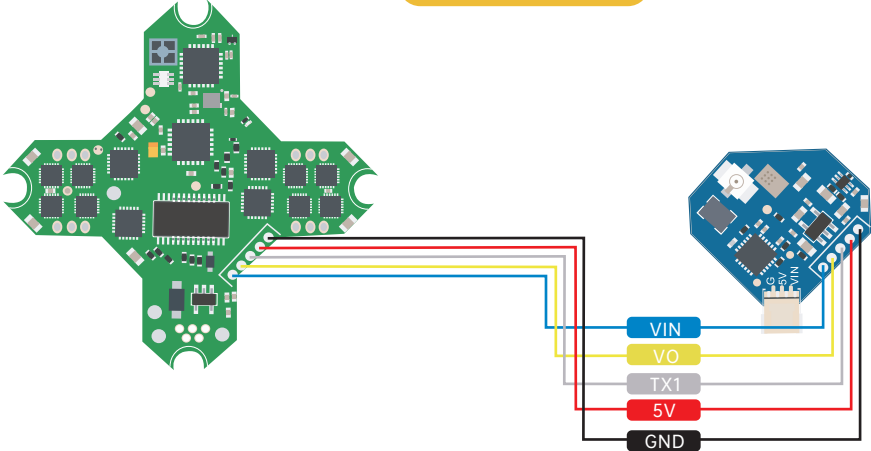
电机



摄像头



图传



Identifier	Configuration/MSP	Serial Rx	Telemetry Output	Sensor Input	Peripherals
USB VCP	<input checked="" type="checkbox"/> 115200	<input type="checkbox"/>	Disabled AUTO	Disabled AUTO	Disabled AUTO
UART1	<input type="checkbox"/> 115200	<input type="checkbox"/>	Disabled AUTO	Disabled AUTO	VTX (TBS Smi) AUTO
UART2	<input type="checkbox"/> 115200	<input checked="" type="checkbox"/>	Disabled AUTO	Disabled AUTO	Disabled AUTO