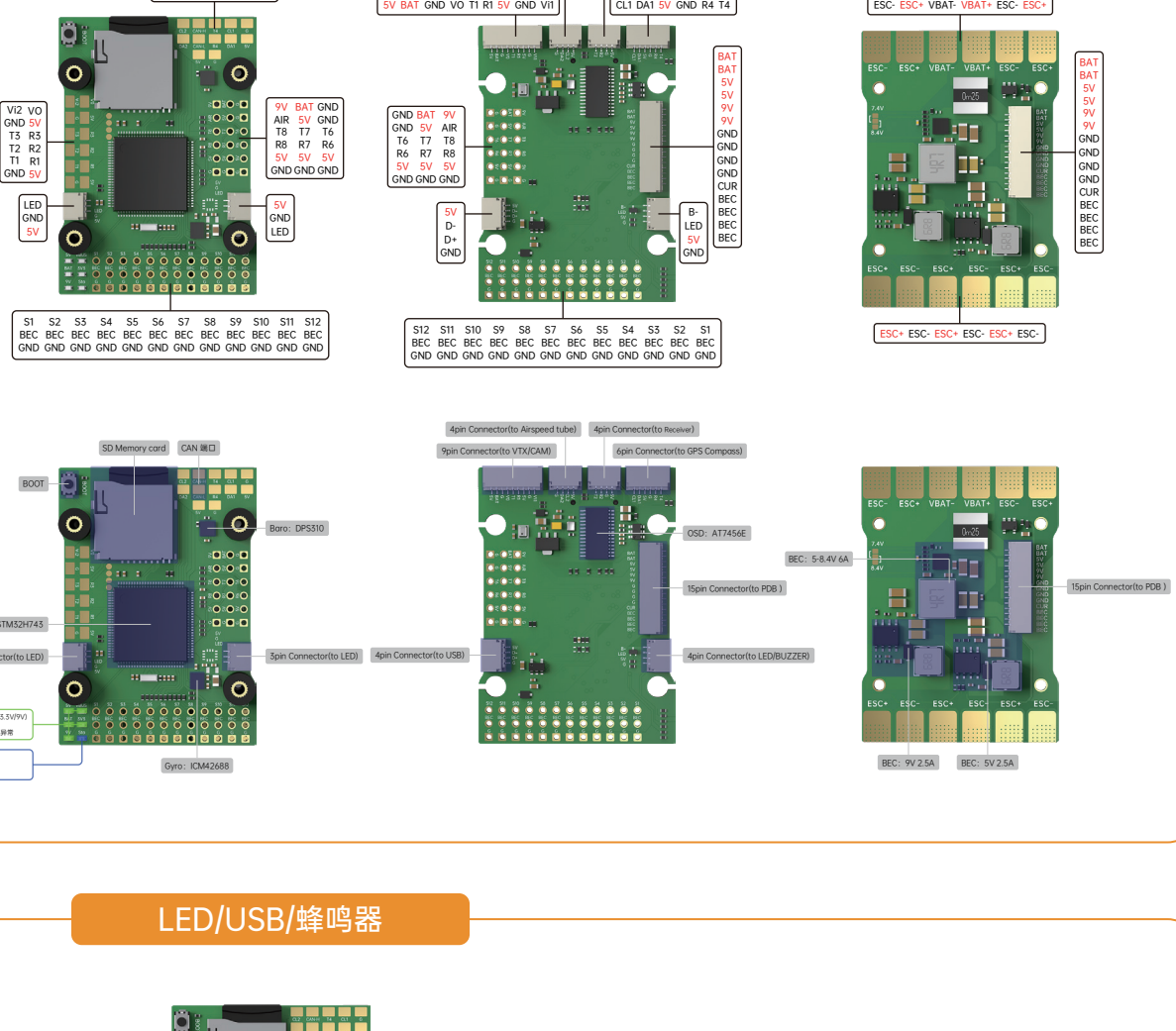


iFlight BLITZ Wing H743 说明书

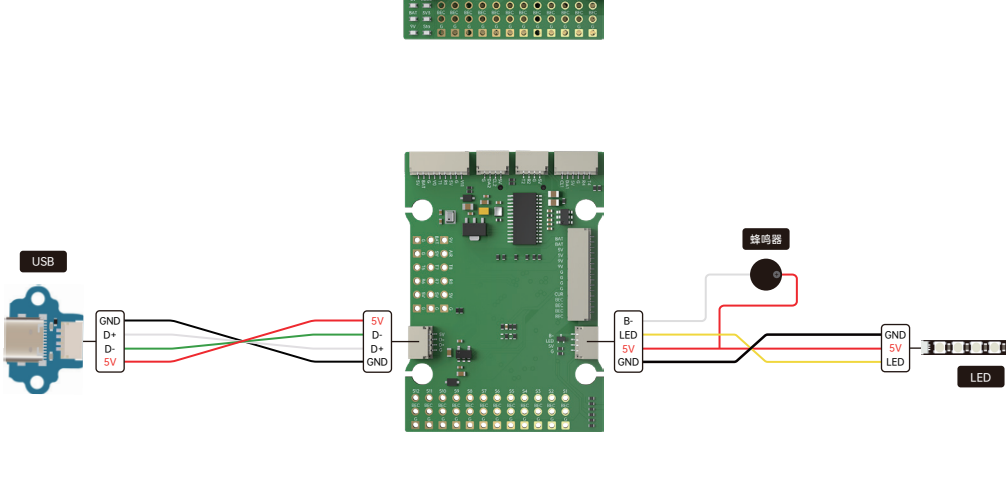
基本参数:

MCU: STM32F745  
Gyro: ICM42688P  
Bore: DPS310  
OSD: A7456E  
I-BEC: 输出5V 2.5A持续输出电流, 5A峰值电流(5SP) (for FC)  
E-BEC: 输出5V 7.5A持续输出电流, 5A峰值电流(5SP) (for VTX)  
I-BEC: 输出5V 7.5A持续输出电流, 5A峰值电流(5SP) (for Servo) (通过焊盘直接连接)  
Blackbox: MicroSD card  
Uart: 8\*UART1, UART2, UART3, UART4, UART6, UART7, UART8  
2-DC: 1\*CAN  
2\*PWM outputs  
UART1 for Receiver  
UART2 for GPS  
UART3, UART6, UART7 for free  
B-Output PWM outputs  
UART1.0 spin connector for HD VTX/Analog VTX/CAM (R/T/U/G/P/V/O)  
UART2.0 spin connector for Any Receiver or DJI (S/R2/S2V (R/G2/T2))  
UART3.0 spin connector GPS (T/R/R/G/S/V)  
UART4.0 spin connector LED/Beeper (S/V/G/V/N/C)  
e-4040 LEDs for FC STATUS (S/V) / (BAT) / (V) / (S-V) / (S-V) / (Start)  
SmartAudio/IRCTramp VTX protocol supported  
VDS2525Wing: Yes  
Beeper: Yes  
Switchable dual camera inputs  
Switchable 5V/4.5V 4V outputs  
7-56V DC IN (2-8S)  
尺寸: 36.9\*52mm  
重量: 35g

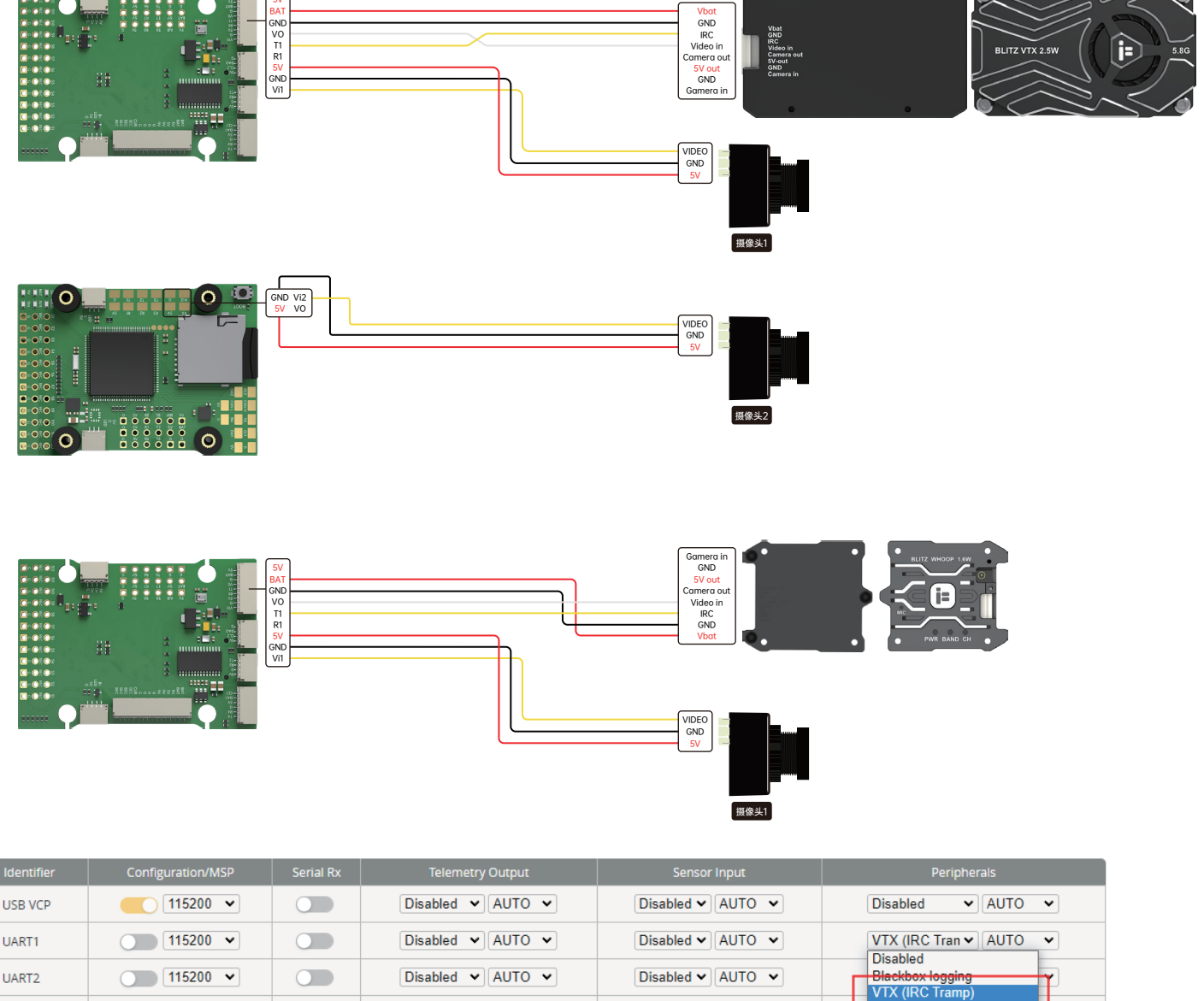
附件:  
iFLIGHT BLITZ Wing H743  
ArduPilot: BlitzWingH743



LED/USB/蜂鸣器

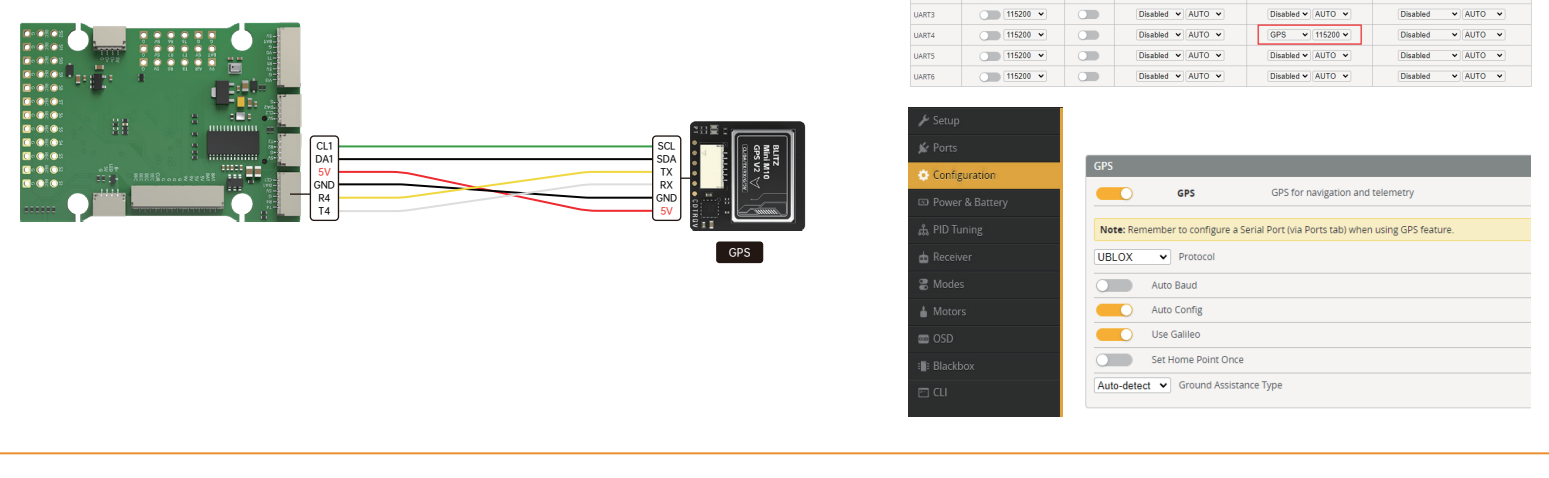


图传/摄像头

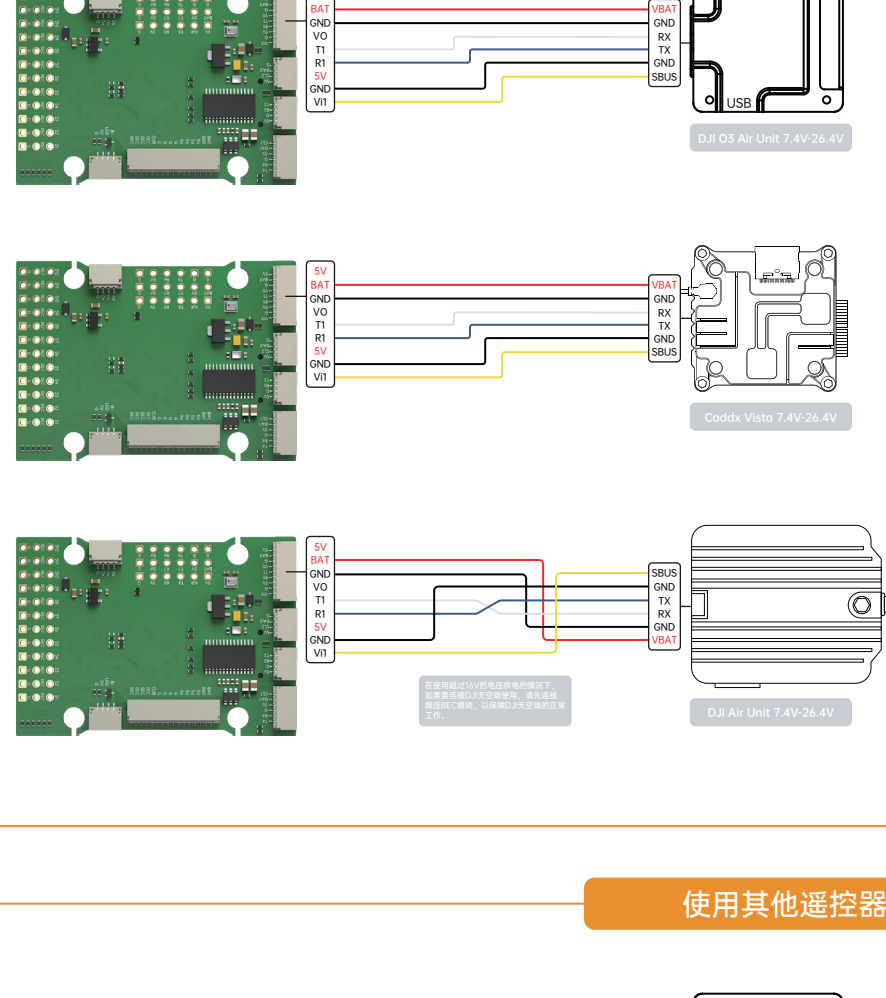


Identifier	Configuration/MSP	Serial Rx	Telemetry Output	Sensor Input	Peripherals
USB VCP	115200		Disabled AUTO	Disabled AUTO	Disabled AUTO
UART1	115200		Disabled AUTO	Disabled AUTO	VTX (IRC Tran) AUTO
UART2	115200		Disabled AUTO	Disabled AUTO	Disabled AUTO
UART3	115200		Disabled AUTO	Disabled AUTO	Disabled AUTO
UART4	115200		Disabled AUTO	Disabled AUTO	Disabled AUTO
UART5	115200		Disabled AUTO	Disabled AUTO	Disabled AUTO
UART6	115200		Disabled AUTO	Disabled AUTO	Disabled AUTO

空速管/GPS



使用DJI遥控器

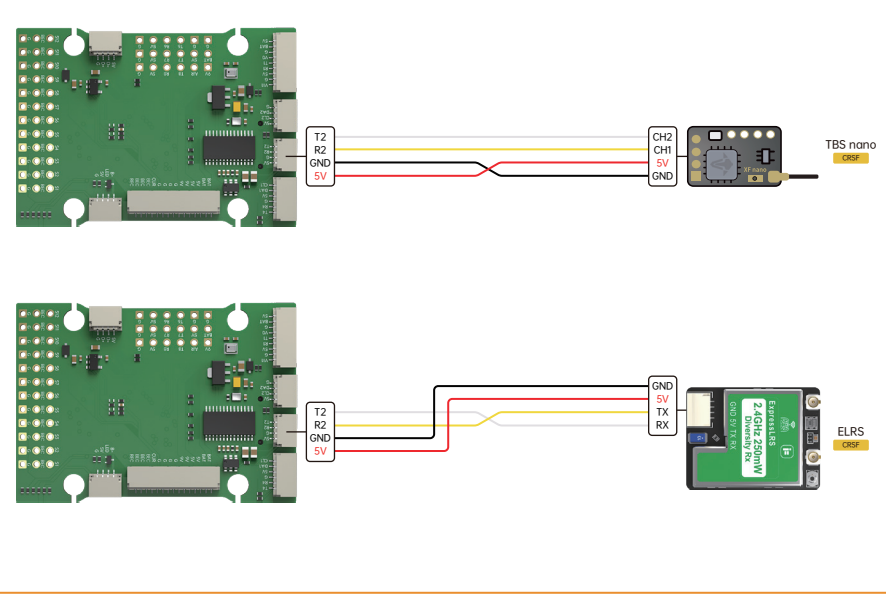


Identifier	Configuration/MSP	Serial Rx	Telemetry Output	Sensor Input	Peripherals
USB VCP	115200		Disabled AUTO	Disabled AUTO	Disabled AUTO
UART1	115200		Disabled AUTO	Disabled AUTO	VTX (IRC Tran) AUTO
UART2	115200		Disabled AUTO	Disabled AUTO	Disabled AUTO
UART3	115200		Disabled AUTO	Disabled AUTO	Disabled AUTO
UART4	115200		Disabled AUTO	Disabled AUTO	Disabled AUTO
UART5	115200		Disabled AUTO	Disabled AUTO	Disabled AUTO
UART6	115200		Disabled AUTO	Disabled AUTO	Disabled AUTO

Receiver configuration settings for DJI remote control, including Serial (via UART) and Receiver Mode options.

- 在Betaflight4.4版本下开启天空端OSD在端口界面
- 天空端信号线连接的端口号外位置选择 VTX(MSP+Displayport)
- 注意: O3天空端使用的是大疆二代FPV遥控器 Air Unit 和 Visto使用的是大疆一代遥控器
- 使用DJI遥控器时, 存在两种不同的协议, 详细解释和使用如下
- 当使用sbus baud fast模式时, 眼睛内的协议页面需要设置为Sbus BaudFast, 而飞控则进入Betaflight的CLI界面, 输入 "set sbus baud fast=ON"输入"save"保存, 则为使用 sbus baud fast的模式。
- 使用普通SBUS模式时, 眼睛内的协议页面需要设置为普通, 而飞控则进入Betaflight的CLI界面, 输入 "set sbus baud, fast=OFF"输入"save"保存, 则为不使用sbus\_baud\_fast的模式。

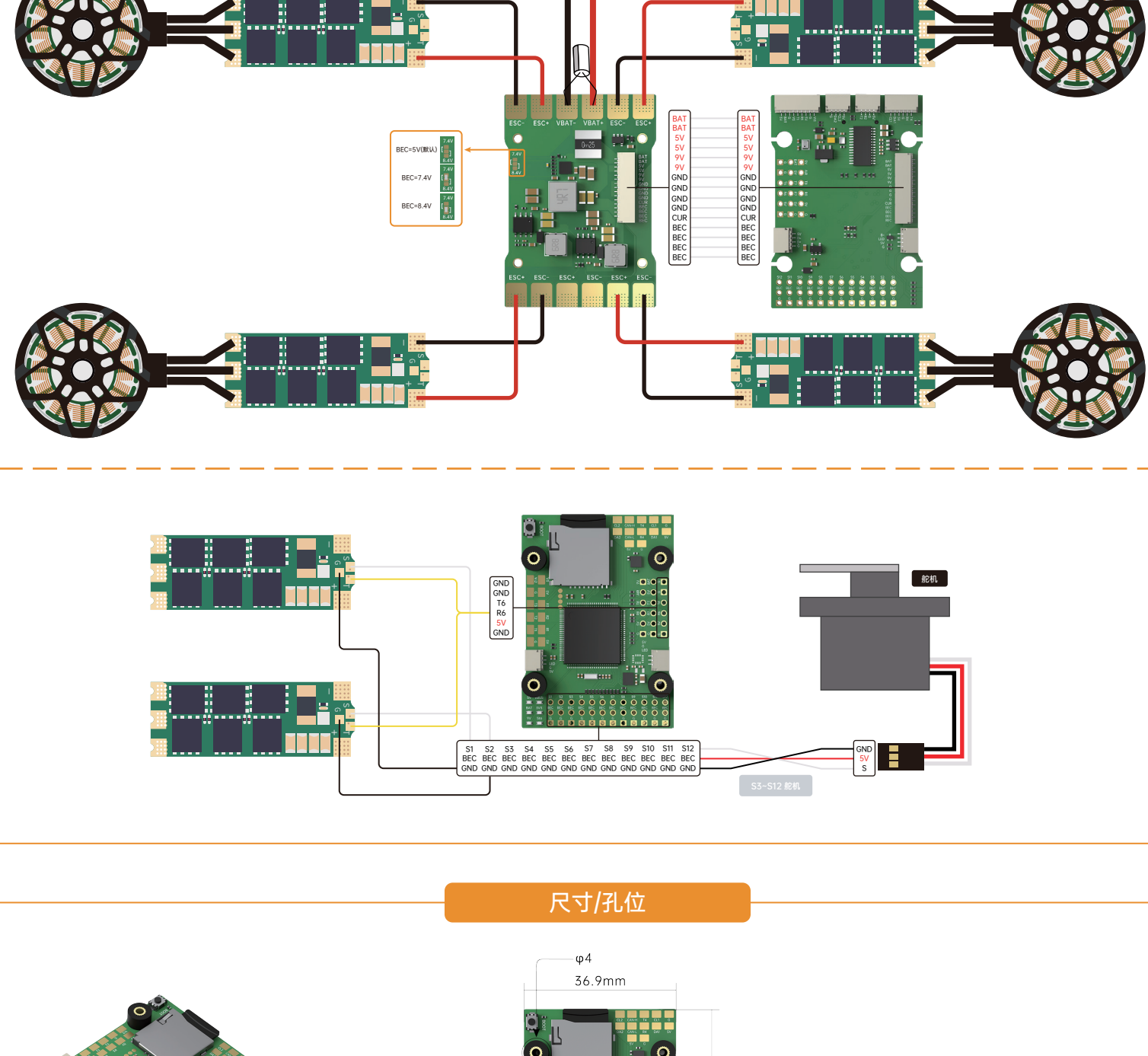
使用其他遥控器



Identifier	Configuration/MSP	Serial Rx	Telemetry Output	Sensor Input	Peripherals
USB VCP	115200		Disabled AUTO	Disabled AUTO	Disabled AUTO
UART1	115200		Disabled AUTO	Disabled AUTO	VTX (IRC Tran) AUTO
UART2	115200		Disabled AUTO	Disabled AUTO	Disabled AUTO
UART3	115200		Disabled AUTO	Disabled AUTO	Disabled AUTO
UART4	115200		Disabled AUTO	Disabled AUTO	Disabled AUTO
UART5	115200		Disabled AUTO	Disabled AUTO	Disabled AUTO
UART6	115200		Disabled AUTO	Disabled AUTO	Disabled AUTO

Receiver configuration settings for other remote controllers, including Serial (via UART) and Receiver Mode options.

电调/舵机



尺寸/孔位

